

CALENDAR



2026

MAY

S	M	T	W	T	F	S
					1	2
3	4	5	6	7	8	9
10	11	12	13	14	15	16
17	18	19	20	21	22	23
24	25	26	27	28	29	30
31						

Back To School



CLASS DAYS - 11

BAGLESS DAYS-3

SUNDAYS-3

TOTAL NO.OF DAYS IN THE MONTH-17

OBSERVATION DAYS-2

OTHER HOLIDAYS -1



IMPORTANT DAYS

- 1-LABOURS DAY
- 9-RABINDRANATH TAGORE JAYANTI
- 8-WORLD REDCROSS DAY
- 11-NATIONALTECHNOLOGY DAY
- 10-MOTHER'S DAY
- 15-INTERNATIONAL DAY OF FAMILY
- 17-WORLD TELE COMMUNICATION DAY
- WORLD HYPERTENSION DAY
- 15-ENDANGERED SPECIES DAY
- 22-INTERNATIONAL DAY FOR BIOLOGICAL DIVERSITY
- 28-BAKRID
- 31-ANTI-TOBACCO DAY



DAYS TO BE OBSERVED

10-MOTHER'S DAY

31-ANTI-TOBACCO DAY

SCIENCE CHALLENGE(CBSE)



SCHEDULE OF THE MONTH

- 11-STAFF REPORTING AFTER SUMMER VACATION
- ROAD SAFETY RULES MEETING WITH TRANSPORTATION FACULTY.
- 11-STUDENTS REPORTING AFTER SUMMER VACATION (GRADE-1 TO 8)
- ALL TEACHERS ORIENTATION PROGRAMME
- OXFORD TEACHERS ORIENTATION PROGRAMME
- HOD'S MEETING





June

2026



sun	mon	tue	wed	thu	fri	sat
	1	2	3	4	5	6
7	8	9	10	11	12	13
14	15	16	17	18	19	20
21	22	23	24	25	26	27
28	29	30				



CLASS DAYS-25

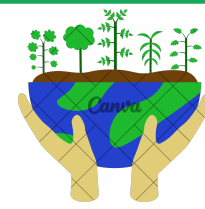
BAGLESS DAYS-4

SUNDAYS-4

OTHER HOLIDAYS -1

TOTAL NO OF DAYS IN A MONTH-30

OBSERVATION DAYS -8



IMPORTANT DAYS

- 1-WORLD MILK DAY / GLOBAL DAY OF PARENTS
- 3-WORLD BICYCLE DAY
- 5-ENVIRONMENT DAY
- 7-WORLD FOOD SAFETY DAY
- 8-WORLD OCEAN DAY / WORLD BRAIN TUMOR DAY
- 21-INTERNATIONAL YOGA DAY
- 26-MOHARAM LAST DAY
- 27-KEMPEGOWDA JAYANTHI
- 30-WORLD ASTEROID DAY



DAYS TO BE OBSERVED

- 1-WORLD MILK DAY/ GLOBAL DAY OF PARENTS
- 3-WORLD BICYCLE DAY
- 5-ENVIRONMENT DAY (CBSE)
- 7-WORLD FOOD SAFETY DAY
- 8-WORLD OCEAN DAY / WORLD BRAIN TUMOR DAY
- 19-NATIONAL READING DAY (CBSE)
- 21-INTERNATIONAL YOGA DAY (CBSE)
- 27-KEMPEGOWDA JAYANTHI

SCHEDULE OF THE MONTH

- 1-SELECTION OF CLASS PERFECTS
- 3-TOBACO AND POCSO AWARENESS SESSION FOR GRADE-8,9 & 10, 1-LKG STUDENTS REPORTING
- 6-ROAD SAFETY RULES PROGRAMME FOR STUDENTS
- 8-13- PRE MID TERM EXAM FOR GRADE-9&10
- 15-19 STUDENTS COUNCIL ELECTION CAMPAIGN
- 12-ADOLESCENT AWARENESS PROGRAMME FOR G-5&6
- 19-ADOLESCENT AWARENESS PROGRAMME FOR G-7&8
- 20-STUDENTS COUNCIL ELECTION
- 23-ADOLESCENT AWARENESS PROGRAMME FOR G-9&10
- 30-SELECTION OF STAR OF THE MONTH
- 29-INVESTITURE CEREMONY



7 JULY

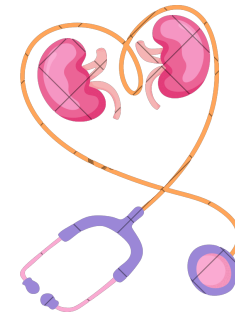
2026

S	M	T	W	T	F	S
			1	2	3	4
5	6	7	8	9	10	11
12	13	14	15	16	17	18
19	20	21	22	23	24	25
26	27	28	29	30	31	



SCHEDULE OF THE MONTH

- 1-SELECTION OF CLASS PERFECT
- 4-MEETING FOR SPLS,DSPLS ,CAPTAINS &VICE CAPTAINS
- 1-DIPPING FOR TURN OF HOUSES ASSEMBLY
8 TO 10 PT-1 FOR GRADE 1 TO 8
- 30-SELECTION OF STAR OF THE MONTH



IMPORTANT DAYS

- 1-DOCTORS DAY
- 11-WORLD POPULATION DAY
- 12-MALALA DAY
- 18-MANDELA DAY
- 26-KARGIL VIJAY DIWAS
- 28-WORLD HEPATITIS DAY/
WORLD NATURE
CONSERVATION DAY



DAYS TO BE OBSERVED

- 1-DOCTORS DAY
- 11-WORLD POPULATION DAY
- 12-MALALA DAY
- 18-MANDELA DAY
- 26-KARGIL VIJAY DIWAS
- 26-CONSERVATION OF THE MANGROVE
ECO SYSTEM (CBSE)
- 28-WORLD HEPATITIS DAY
- 28-WORLD NATURE CONSERVATION
DAY(CBSE)
- ARYABHATTA GANITH CHALLENGE(CBSE)
- HERITAGE QUIZ (CBSE)
- READING CHALLENGE (STARTS)

CLASS DAYS-23

BAG LESS DAYS -4

SUNDAYS-4

OTHER HOLIDAYS-0

**TOTAL NUMBER OF DAYS IN A
MONTH-31**

OBSERVATION DAYS-8

2026
AUGUST 08

SUN	MON	TUE	WED	THUE	FRI	SAT
						1
2	3	4	5	6	7	8
9	10	11	12	13	14	15
16	17	18	19	20	21	22
23	24	25	26	27	28	29
30	31					



SCHEDULE OF THE MONTH

- 1-SELECTION OF CLASS PERFECTS
- 3-MEETING WITH HODS & MENTORS REGARDING THE CELEBRATION OF INDEPENDENCE DAY
- 8-REVIEW MEETING WITH SPLS DSPLS CAPTAINS & VICE CAPTAINS
- 8-SPLS & DSPLS MEETING FOR THE CELEBRATION OF TEACHERS DAY
- 17-24 MID EXAM FOR GRADE-9 & 10
- 18 TO 20 P T-2 FOR GRADE 1 TO 8
- 31-SELECTION OF STAR OF THE MONTH



IMPORTANT DAYS

- 3-NATIONAL ORGAN DONATION DAY
- 7-NATIONAL HANDLOOM DAY
- 12-INTERNATIONAL YOUTH DAY
- 13-INTER NATIONAL ORGAN DONATION DAY
- 14-PARTION HORROS REMEMBRANCE DAY
- 15-INDEPENDENCE DAY
- 19-WORLD HUMANITARIAN DAY
- 21-VARAMAHALAKSMI FESTIVAL
- 26-WOMENS EQUALITY DAY /EID-MILAD/ONAM
- 28-RAKSHABANDHAN
- 29-NATIONAL SPORTS DAY



DAYS TO BE OBSERVED

- 3-NATIONAL ORGAN DOINATION DAY
- 7-NATIONAL HANDLOOM DAY
- 15-INDEPENDENCE DAY
- 19-WORLD HUMANITARIAN DAY
- 26-WOMENS EQUALITY DAY
- 28-RAKSHABANDHAN
- 29-NATIONAL SPORTS DAY(CBSE)
- ARYABHATTA GANIT CHALLENGE(CBSE)
- STORY TELLING COMPETITION (CBSE)



- CLASS DAYS -20
- BAGLESS DAYS-4
- SUNDAYS-5
- OTHER HOLIDAYS-2
- TOTAL NUMBER OF DAYS IN MONTH-31
- OBSERVATION DAYS-9





SEPTEMBER

2026

SUN	MON	TUE	WED	THU	FRI	SAT
30	31	01	02	03	04	05
06	07	08	09	10	11	12
13	14	15	16	17	18	19
20	21	22	23	24	25	26
27	28	29	30	01	02	03



SCHEDULE OF THE MONTH

- 1-SELECTION OF CLASS PREFECTS
- 7-REVIEW MEETING SPLS DSPLS,CAPTAINS AND VICE-CAPTAINS
- DAY OUT FOR LEVEL-1,2 AND GRADE 1 &2
- 30-SELECTION OF STAR OF THE MONTH
- SCHOOL LEVEL SPORTS DAY



IMPORTANT DAYS

- 1-7 NUTRITION WEEK
- 2-WORLD COCONUT DAY
- 4-KRISHNASHTAMI
- 5-TEACHERS DAY
- 8-GRAND PARENTS DAY/LITERACY DAY
- 10-SUCIDE PREVENTION DAY
- 11-NATIONAL FOREST MARTYRS DAY
- 14-WORLD FIRST AID DAY
- 14-HINDI DIWAS
- 14-GANESHA CHATHURTHI
- 15-ENGINEERS DAY / INTERNATIONAL DAY OF DEMOCRACY
- 16-WORLD OZONE DAY
- 25-PHARMACIST DAY
- 27-WORLD TOURISM DAY
- 29-HEART DAY



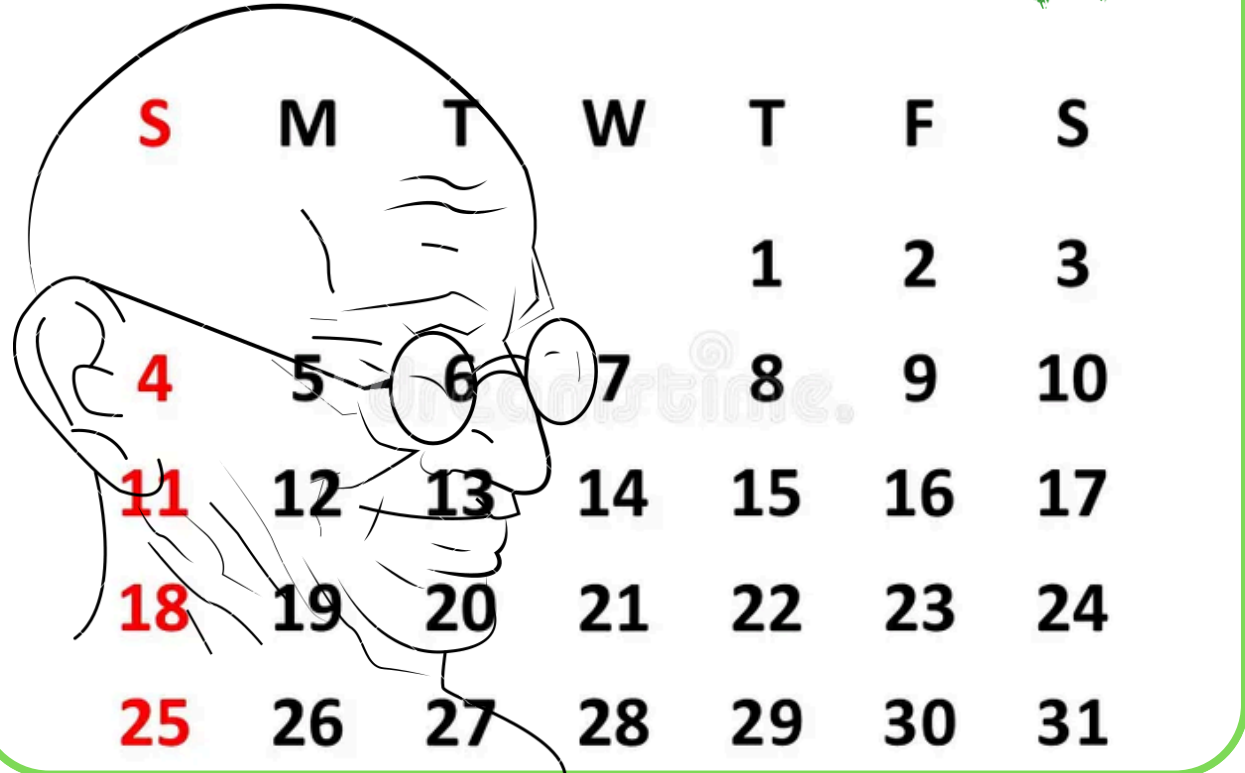
DAYS TO BE OBSERVED

- 1-7 NUTRITION WEEK
- 5-TEACHERS DAY
- 10-SUCIDE PREVENTION DAY/GRAND PARENTS DAY
- 11-NATIONAL FOREST MARTYRS DAY
- 14-WORLD FIRST AID DAY
- 14-HINDI DIWAS
- 15-ENGINEERS DAY / INTERNATIONAL DAY OF DEMOCRACY
- 16-WORLD OZONE DAY
- 25-PHARMACIST DAY
- 29-HEART DAY
- SPORTS AND GAMES COMPETITION (CBSE)
- SCIENCE EXHIBITION (CBSE)
- STORY TELLING COMPETITION(CBSE)

- CLASS DAYS-21
- BAGLESS DAYS-4
- SUNDAYS-4
- OTHER HOLIDAYS -1
- TOTAL NUMBER OF DAYS IN A MONTH-30
- OBSERVATION DAYS-11



October 2026



S	M	T	W	T	F	S
				1	2	3
4	5	6	7	8	9	10
11	12	13	14	15	16	17
18	19	20	21	22	23	24
25	26	27	28	29	30	31

SCHEDULE OF THE MONTH

1-SELECTION OF CLASS PREFECTS

3-REVIEW MEETING WITH SPLS,DSPLS,CAPTAINS & VICE CAPTAINS

12 TO 17 POST MIDTERM EXAMINATION FOR GRADE -9 TO 10

12- TO 17 MIDTERM EXAMINATION FOR GRADE -1 TO 8

19 TO 24 DASARA VACATIONS

26-SCHOOL REOPEN

EDUCATIONAL TRIP FOR GRADE-9 & 10

IMPORTANT DAYS

- 2-GANDHI JAYANTI
- 3-WORLD SMILE DAY
- 4-WORLD ANIMAL WELFARE DAY
- 5-WORLD TEACHERS DAY
- 8-INDIAN AIR-FORCE DAY
- 9-WORLD POST DAY
- 10-MAHALAYA AMAVASYA
- 11-INTERNATIONAL DAY OF THE GIRL CHILD
- 13-INTER-NATIONAL DISASTER RISK REDUCTION DAY
- 14-INTERNATIONAL E-WASTE DAY
- 15-WORLD STUDENTS DAY
- 15-GLOBAL HANDWASHING DAY
- 20-DUSSEHRA
- 24-UNITED NATIONS DAY/WORLD POLIO DAY
- 26-VALMIKI JAYANTI
- 31-NATIONAL EKTA DIWAS

DAYS TO BE OBSERVED

- 2-GANDHI JAYANTI
- 4-WORLD ANIMAL WELFARE DAY
- 8-INDIAN AIR-FORCE DAY
- 9-WORLD POSTAL DAY
- 11-INTERNATIONAL DAY OF THE GIRL CHILD
- 13-NATURAL DISASTER REDUCTION DAY (CBSE)
- 14-INTERNATIONAL E-WASTE DAY (CBSE)
- 15-WORLD STUDENTS DAY
- 15-GLOBAL HANDWASHING DAY
- 26-VALMIKI JAYANTI
- 31-NATIONAL EKTA DIWAS
- EXPRESSION SERIES QUARTER-3 (CBSE)



CLASS DAYS- 17

BAGLESS DAYS-5

SUNDAYS-4

OTHER HOLIDAYS-0

MID-TERM VACATIONS -5DAYS

TOTAL NO.OF DAYS IN A MONTH-31

OBSERVATION DAYS-11





SCHEDULE OF THE MONTH

- 2-SELECTION OF CLASS PREFECTS
- 7-REVIEW MEETING WITH SPLS DSPLS CAPTAINS AND VICE CAPTAINS
- 2-PLANNING MEETING FOR SCHOOL DAY
- 14-CHILDRENS DAY CELEBRATION
- 14-ANNUAL DAY
- 21-REVIEW MEETING WITH STAFF
- 23-28 PRE-BOARD EXAM FOR GRADE-9&10
- 30-SELECTION OF STAR OF THE MONTH
PICNIC FOR GRADE-6.7 &8



IMPORTANT DAYS

- 1-KANNADA RAJYOTSAVA
- 5-WORLD TSUNAMI AWARENESS DAY
- 6-INTERNATIONAL DAY FOR PREVENTING THE EXPLOITATION OF THE ENVIRONMENT
- 7-NATIONAL CANCER AWARENESS DAY
- 10-DEEPAVALI FESTIVAL
- 11- NATIONAL EDUCATION DAY
- 13-WORLD KINDNESS DAY
- 14-WORLD DIABETIES DAY/ CHILDRENS DAY
- 15-WORLD DAY OF REMEMBRANCE FOR ROAD TRAFFIC VICTIMS
- 17-NATIONAL EPILEPSY DAY/
- 19-INTERNATIONAL MENS DAY/ WORLD TOILET DAY
- 21-WORLD TELEVISION DAY
- 25-INTERNATIONAL DAY FOR ELIMINATION OF VIOLENCE AGAINST WOMEN
- 26-CONSTITUTION DAY
- 27-KANAKADASA JAYANTHI



DAYS TO BE OBERVED

- 1-KANNADA RAJYOTSAVA
- 7-NATIONAL CANCER AWARENESS DAY
- 13-WORLD KINDNESS DAY
- 14-WORLD DIABETIES DAY/ CHILDRENS DAY
- 17 WORLD DAY OF REMEMBRANCE FOR ROAD
- 19-INTERNATIONAL MENS DAY/ WORLD TOILET DAY
- 21-WORLD TELEVISION DAY
- 26-CONSTITUTION DAY
- HERITAGE INDIA QUIZ (CBSE)
- NATIONAL ANNUAL CONFERENCE OF SAHODAYA SCHOOL COMPLEXES (CBSE)
- 27-KANAKA JAYANTI

CLASS DAYS-19

BAGLESS DAYS -4

ANNUAL DAY-1

SUNDAYS-5

OTHER HOLIDAYS-2

TOTAL NO. OF DAYS IN A MONTH-30

OBSERVATION DAYS-9

DECEMBER 2026

Monday	Tuesday	Wednesday	Thursday	Friday	Saturday	Sunday
30	1	2	3	4	5	6
7	8	9	10	11	12	13
14	15	16	17	18	19	20
21	22	23	24	25	26	27
28	29	30	31	1	2	3

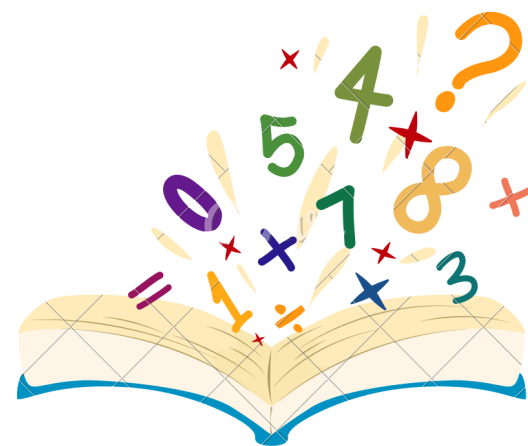


SCHEDULE OF THE MONTH

- 1-SELECTION OF CLASS PREFECTS
- 5-REVIEW MEETING WITH SPLS,DSPLS,CAPTAINS & VICE CAPTAINS
- 21 TO 23 PT-3 FOR GRADE 1 TO 8
- 25-CHRISTMAS HOLIDAY
- 26-31 2ND PRE-BORAD EXAM FOR GRADE-9&10
- PICNIC FOR GRADE 3,4 & 5
- SELECTION OF STAR OF THE MONTH

IMPORTANT DAYS

- 1-WORLD AID'S DAY
- 2-NATIONAL POLLUTION CONTROL DAY
- 4-INDIAN NAVY DAY
- 5-WORLD SOIL DAY
- 6-MAHAPARINIRVAN DIWAS
- 7-INTERNATIONAL CIVIL AVIATION DAY/ARMED FORCES DAY
- 9-INTERNATIONAL ANTI-CORRUPTION DAY
- 10-HUMAN RIGHTS DAY
- 14-NATIONAL ENERGY CONSERVATION DAY
- 16-VIJAY DIWAS
- 20-INTERNATIONAL HUMAN SOLIDARITY DAY
- 22-NATIONAL MATHEMATICS DAY
- 23-KISAN DIWAS
- 24-NATIONAL COSUMER RIGHTS DAY
- 25-CHRISTMAS



DAYS TO BE OBSERVED

- 1-WORLD AID'S DAY
- 2-NATIONAL POLLUTION CONTROL DAY
- 4-INDIAN NAVY DAY
- 5-WORLD SOIL DAY
- 6-NIRVAN DIWAS
- 7-ARMED FORCES DAY
- 9-INTERNATIONAL ANTI-CORRUPTION DAY
- 10-HUMAN RIGHTS DAY
- 14-NATIONAL ENERGY CONSERVATION DAY
- 16-VIJAY DIWAS
- 22-NATIONAL MATHEMATICS DAY
- 23-KISAN DIWAS
- 24-NATIONAL COSUMER RIGHTS DAY
- SCIENCE EXHIBITION (CBSE)



CLASS DAYS	- 22
BAGLESS DAYS	-4
SUNDAYS	- 4
OTHER HOLIDAYS	-1
TOTAL NO.OF DAYS IN A MONTH-31	
OBSERVATION DAYS-13	

2027
JANUARY

SUN	MON	TUE	WED	THU	FRI	SAT
					1	2
3	4	5	6	7	8	9
10	11	12	13	14	15	16
17	18	19	20	21	22	23
24	25	26	27	28	29	30
31						

IMPORTANT DAYS

- 1-NEW YEAR
- 3-SAVITHRI BAI PHULE JAYANTHI
- 12-NATIONAL YOUTH DAY
- 14-MAKARA SANKRANTI
- 15- INDIAN ARMY DAY
- 23-SUBHAS CHANDRA BOSE JAYANTI
- 24-NATIONALGIRLCHILD DAY/INTERNATIONAL DAY OF EDUCATION
- 25-VOTERSDAY/NATIONAL TOURISM DAY
- 26-REPUBLIC DAY
- 30-MARTYRS DAY

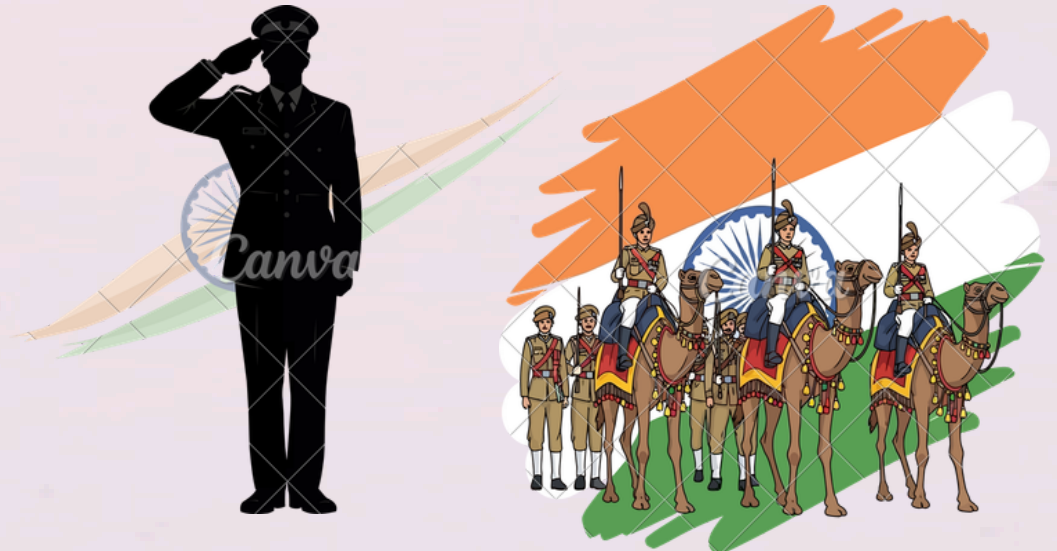


DAYS TO BE OBSERVED

- 12-NATIONAL YOUTH DAY
- 14-MAKARA SANKRANTI
- 23-SUBHAS CHANDRA BOSE JAYANTI
- 25-VOTERS DAY
- 26-REPUBLIC DAY
- 30-MARTYRS DAY

SCHEDULE OF THE MONTH

- 1-NEW YEAR
- 1-SELECTION OF CLASS PREFECTS
- 2-REVIEW MEETING WITH SPLS,DSPLS,CAPTAINS & VICE CAPTAINS
- 27-REVIEW MEETING WITH STAFF
- 30-SELECTION OF STAR OF THE MONTH
- SAHODAYA EXAM FOR GRADE-10
- ANNUAL EXAM FOR GRADE-9



CLASS DAYS	-20
BAGLESS DAYS	-5
SUNDAYS	-5
OTHER HOLIDAYS	-1
TOTAL NO .OF DAYS IN A MONTH	31
OBSERVATION DAYS	-6

2027

FEBRUARY

Mo	Tu	We	Th	Fr	Sa	Su
1	2	3	4	5	6	7
8	9	10	11	12	13	14
15	16	17	18	19	20	21
22	23	24	25	26	27	28

IMPORTANT DAYS

- 3-WORLD RADIO DAY
- 4-CANCER DAY
- 6-PURANDARA DASA JAYANTI
- 12-DARWIN'S DAY
- 13-WORLD RADIO DAY
- 13-SAROJINI NAIDU'S BIRTHDAY
- 19-SHIVAJI MAHARAJ JAYANTI
- 21-MOTHER LANGUAGE DAY
- 28-NATIONAL SCIENCE DAY



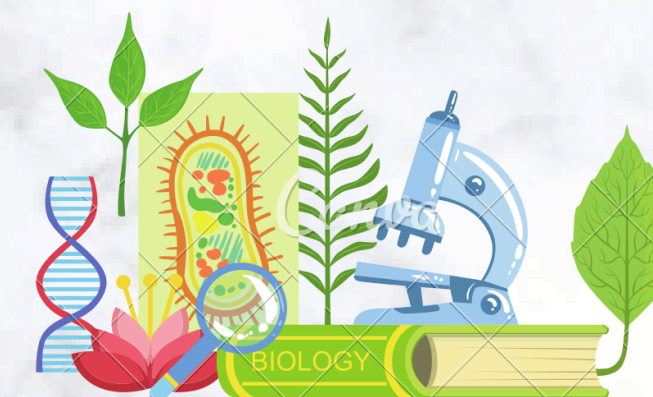
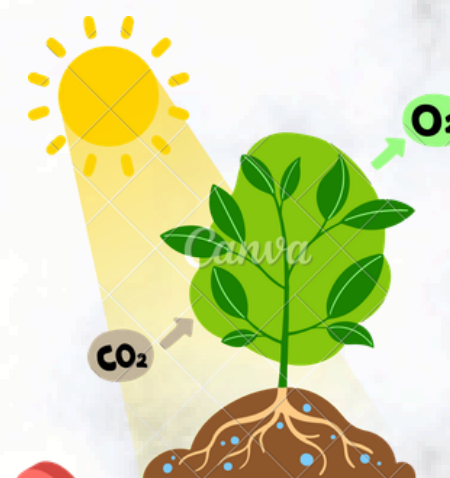
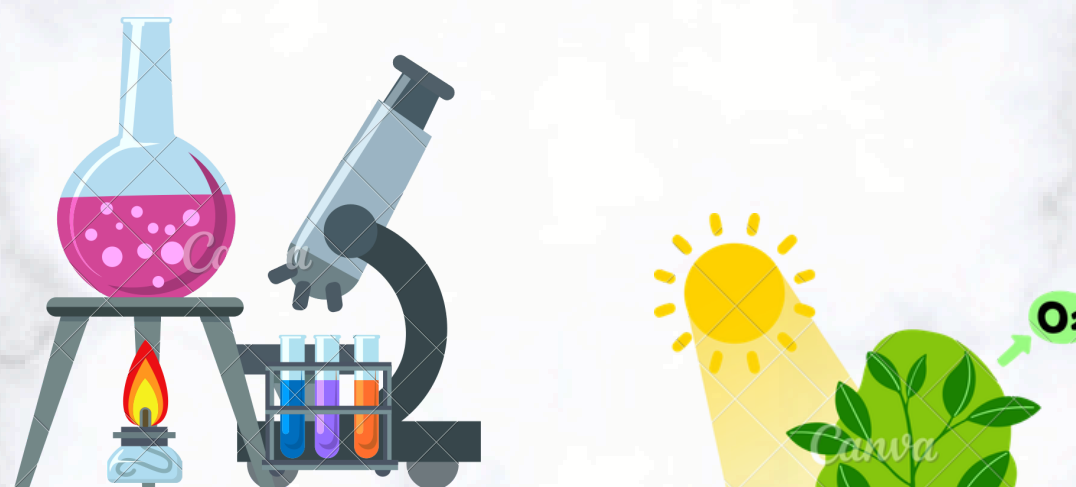
DAYS TO BE OBSERVED

- 3-WORLD RADIO DAY
- 4-CANCER DAY
- 6-PURANDARA DASA JAYANTI
- 13-SAROJINI NAIDU'S BIRTHDAY
- 21-MOTHER LANGUAGE DAY
- 28-SCIENCE DAY



SCHEDULE OF THE MONTH

- 1-SELECTION OF CLASS PREFECTS
- 6-REVIEW MEETING WITH SPLS, DSPLS
CAPTAINS & VICE CAPTAINS
- 3 TO 5 PT-4 FOR GRADE 1 TO 8
- 27-SELECTION OF STAR OF THE MONTH
- ANNUAL EXAM FOR GRADE-10



CLASS DAYS	-20
BAGLESS DAYS	-4
SUNDAYS	-4
OTHER HOLIDAYS	-0
TOTAL NO.OF DAYS IN A MONTH	-28
OBSERVATION DAYS	-6

IMPORTANT DAYS

2-DAYANANDA SARASWATHI JAYANTI

6-MAHA SHIVARATHRI

8-INTERNATIONAL WOMENS DAY

9-RAMADAN

22-HOLI

26-GOOD FRIDAY



DAYS TO BE OBSERVED

2-DAYANANDA SARASWATHI JAYANTI

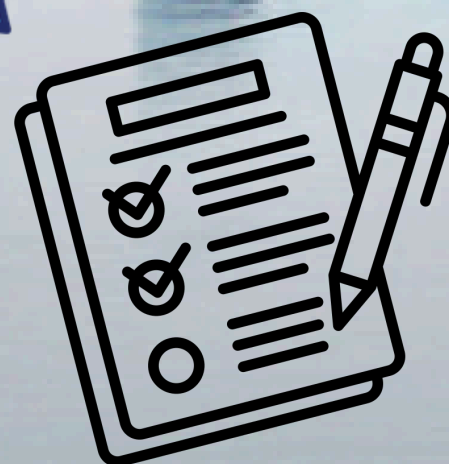
8-INTERNATIONAL WOMENS DAY



2027

MARCH

SUN	MON	TUE	WED	THU	FRI	SAT
	1	2	3	4	5	6
7	8	9	10	11	12	13
14	15	16	17	18	19	20
21	22	23	24	25	26	27
28	29	30	31			



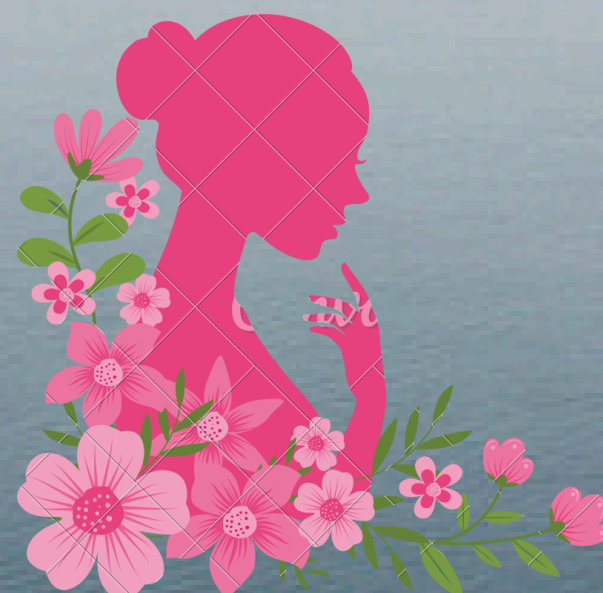
SCHEDULE OF THE MONTH

1-SELECTION OF CLASS PREFECTS

6-REVIEW MEETING WITH SPLS,DSPLS

CAPTAINS& VICE CAPTAINS

15 TO 20 ANNUAL EXAMINATION



CLASS DAYS -15

BAGLESS DAYS -2

SUNDAYS -2

OTHER HOLIDAYS -12

TOTAL NO.OF DAYS IN A MONTH-31

OBSERVATION DAYS -2



April

S	M	T	W	T	F	S
				1	2	3
4	5	6	7	8	9	10
11	12	13	14	15	16	17
18	19	20	21	22	23	24
25	26	27	28	29	30	

DAYS TO BE OBSERVED

14- DR.B R AMBEDKAR JAYANTI

SCHEDULE OF THE MONTH

**10-ANNOUNCEMENT OF RESULT
FROM L-1 TO GRADE-8**